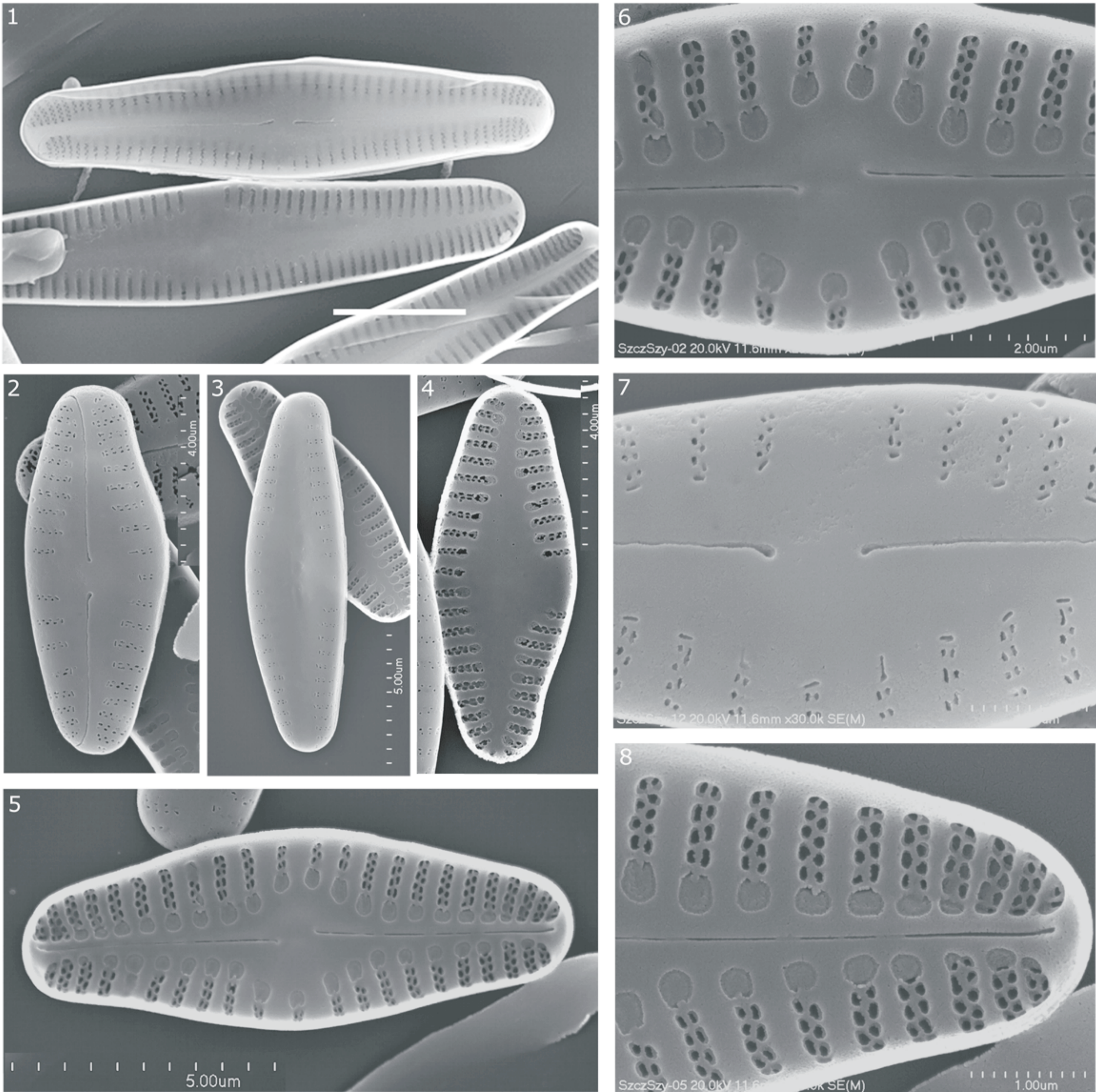


Taxonomical studies in freshwater diatom: valve morphology of the genus *Crenotia* Wojtal



1 - typus generis of the genus *Crenotia* - *C. thermalis* (Rabenhorst) Wojtal 2013, raphe and rapheless valves, outside and inside view, 2-8 - *Crenotia angustior* (Grunow) Wojtal - the species common in springs and boreholes rich in carbon dioxide and chlorides, in sulphide springs. *Crenotia angustior* occurs in waters of a very high conductivity, alkalinity, chlorides, sulphates and other minerals concentration, but low nitrate and dissolved oxygen content. 2, 7 - raphe valve, outside view, 3 - rapheless valve, outside view, 4-6, 8 - raphe valves, inside view, 6, 7 - characteristic for the genus *Crenotia* details of the central area (proximal raphe ends and striae morphology), 8 - details of distal raphe end and helictoglossa. Scale bar (fig.1) - 5 µm.