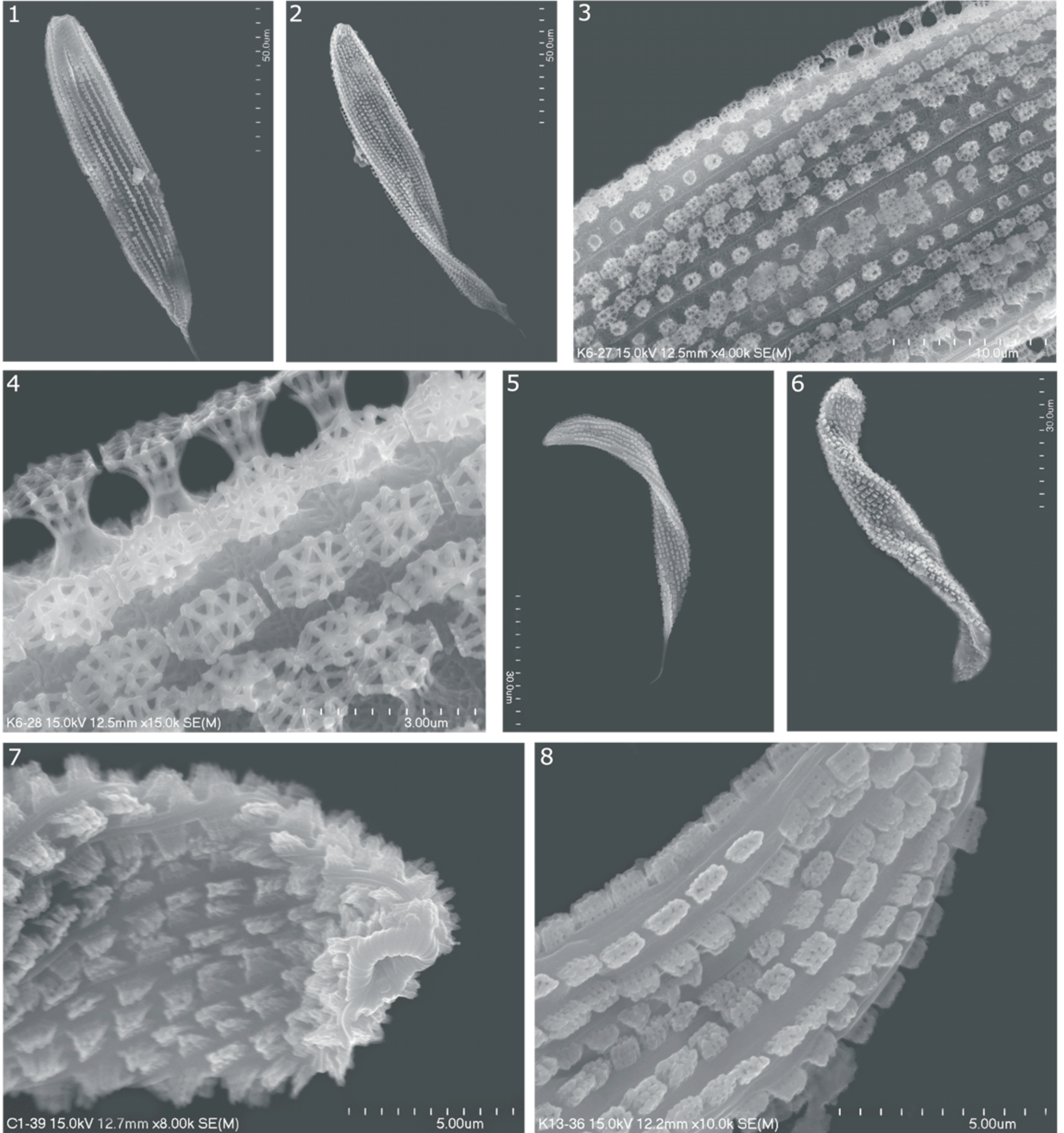




Ultrastructure of the pellicle ornamentation of *Lepocinclis fusca* and *Lepocinclis spirogyroides*



1, 2 - *Lepocinclis fusca* (Klebs) Kosmala & Zakryś, 3 – ultrastructure of the pellicle covered by rows of papillae, 4 – ultrastructure of papillae, 5, 6 – *L. spirogyroides* (Ehrenberg) Marin & Melkonian, overview of cell, 7 – details of pellicle ultrastructure around the anterior part of the cell, 8 - pellicle ornamentation with well visible papillae rows.

Kritsana Duangjan, Chiang Mai University, Thailand; Konrad Wołowski, Department of Phycology, Institute of Botany, PAS.
This study was supported by the statutory fund of the W. Szafer Institute of Botany, Polish Academy of Sciences and though the Royal Golden Jubilee Ph.D. Program of Thailand.